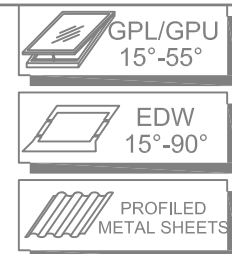


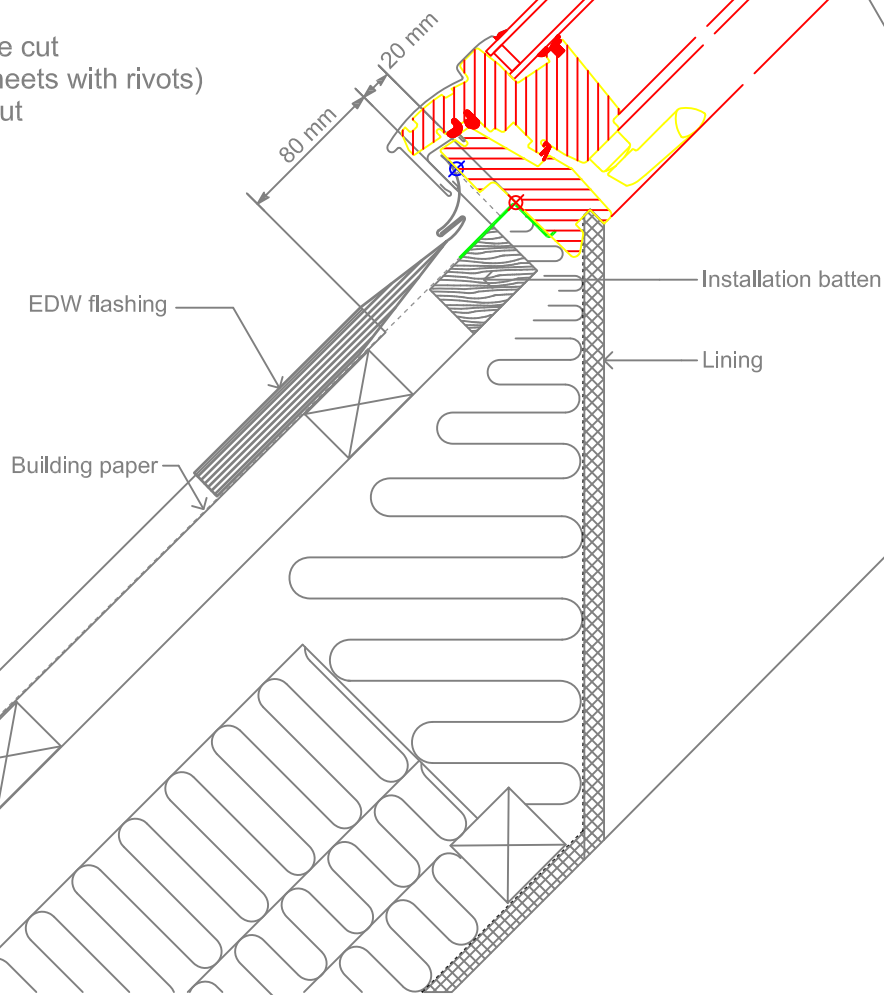
VELUX Skylight installed in new metal roofing.

1. The sheets are fitted 60-80 mm from the bottom frame
2. The flashing is mounted
3. Fit the metal sheets

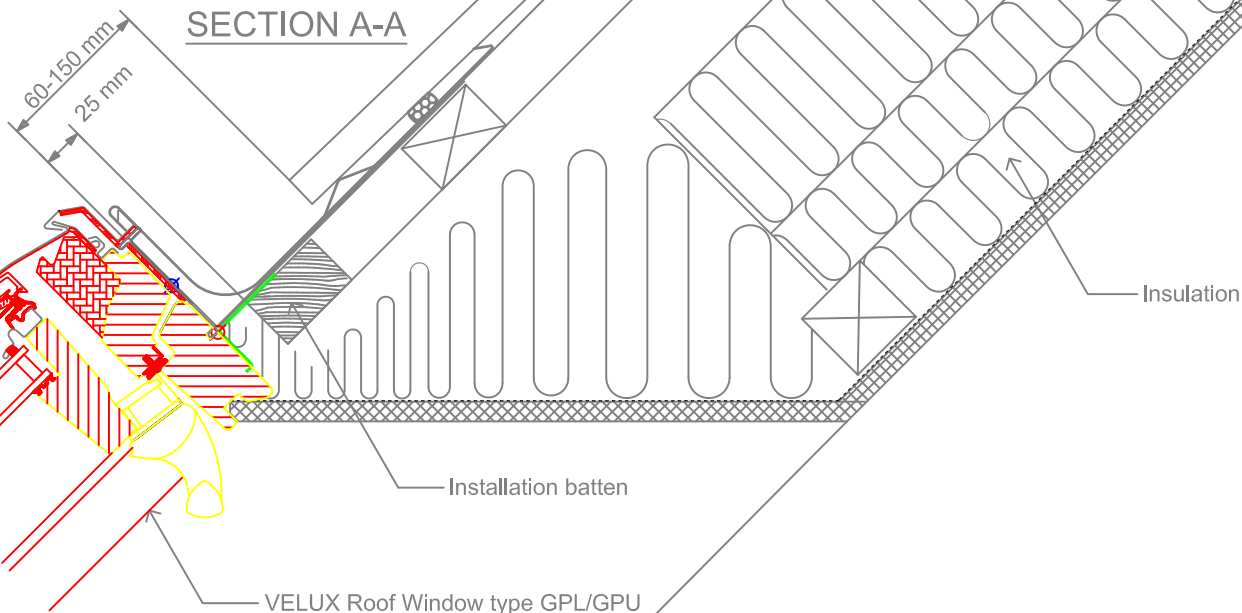


VELUX Skylight installed in to existing metal roofing. **ELEVATIONS**

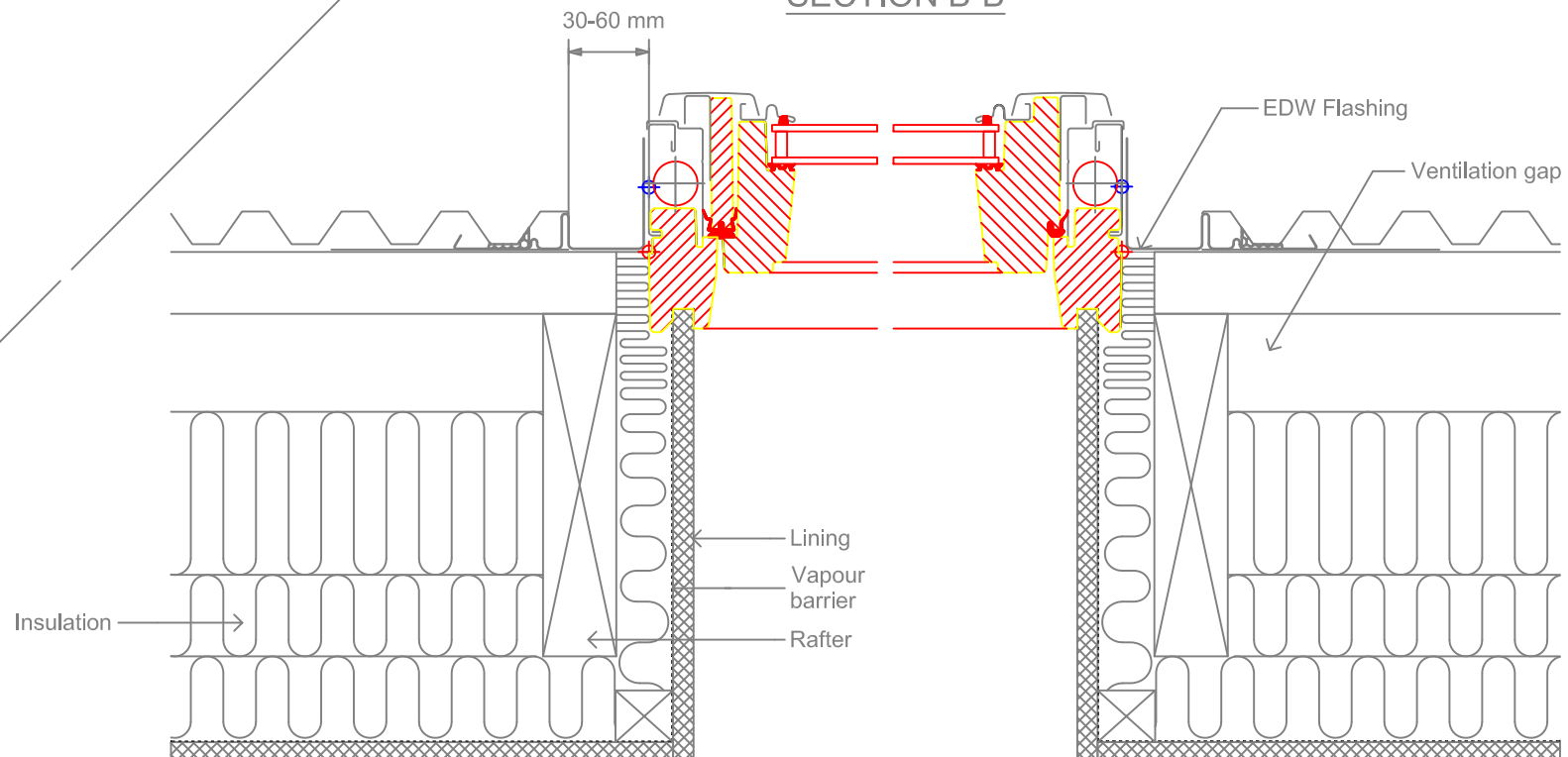
1. The metal sheet is cut to allow for the flashing apron.
The cut must stop on top of a profile
(min 270 mm from the side frame)
2. The fillet piece is placed so it fits the cut
(can be fixed to the existing metal sheets with rivots)
(Shape the fillet piece from the cut-out
sheets of the skylight)



SECTION A-A



SECTION B-B



Kindly be aware that all measurements on this drawing must be checked directly on the building site. With this drawing, VELUX provides only an idea and consequently has no influence on the quality of the actual installation performed on the roof.



Australia Pty Ltd +612 8565 6000
New Zealand Ltd 0800 650 445

GPL/GPU Roof Window and EDW flashing in Profiled Metal Roof

	Name	Date
Drawn by		Jan. 14
Checked by		Jan. 14
Drawing No.		